

(Foto Karin Gerner)

Berlin – Growth and Climate Change

Sybille Schultz-Hüskes, Dr. Karin Gerner - Division Environmental Policy, City of Berlin

Some facts about Berlin

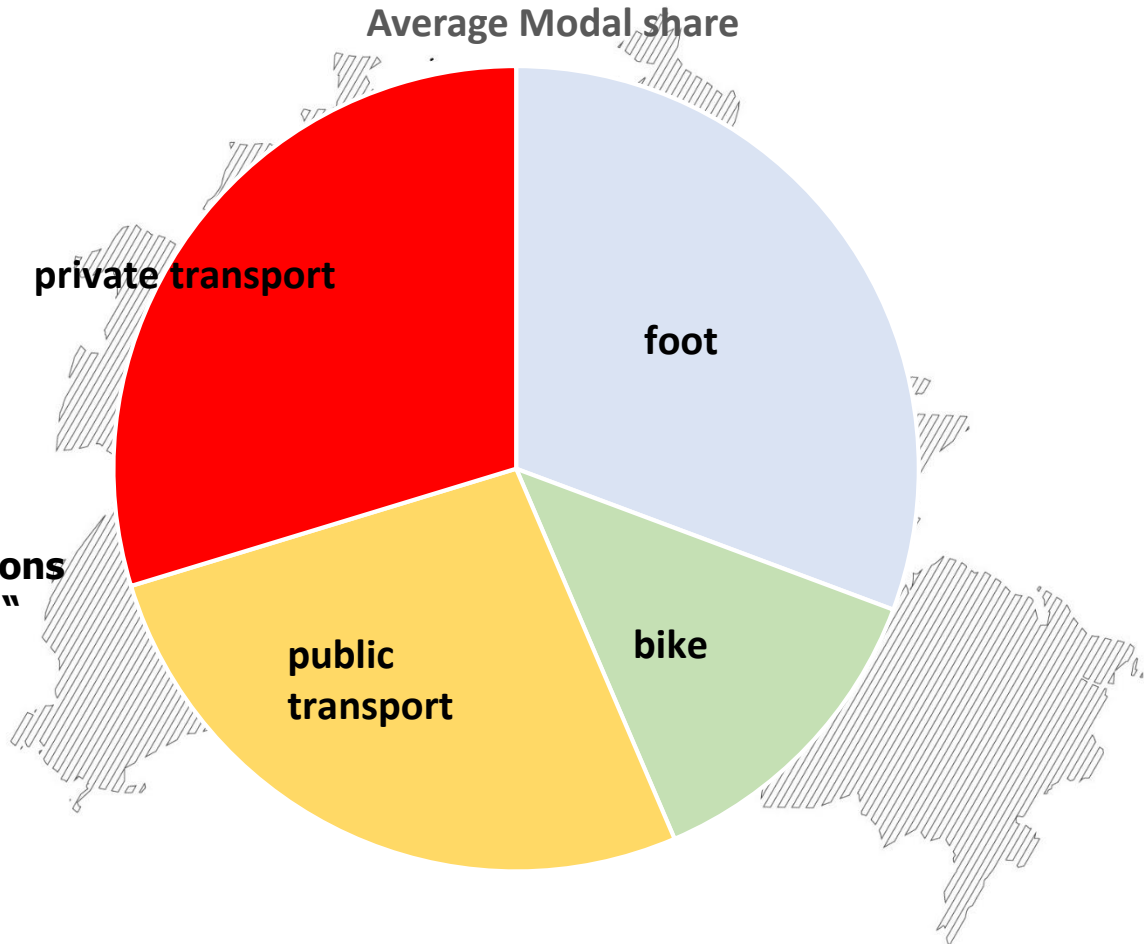
City area (ha) 89,112

**Population 2009 3.4 Mio.
2017 3.6 Mio.
2030 ~3.8 Mio.**

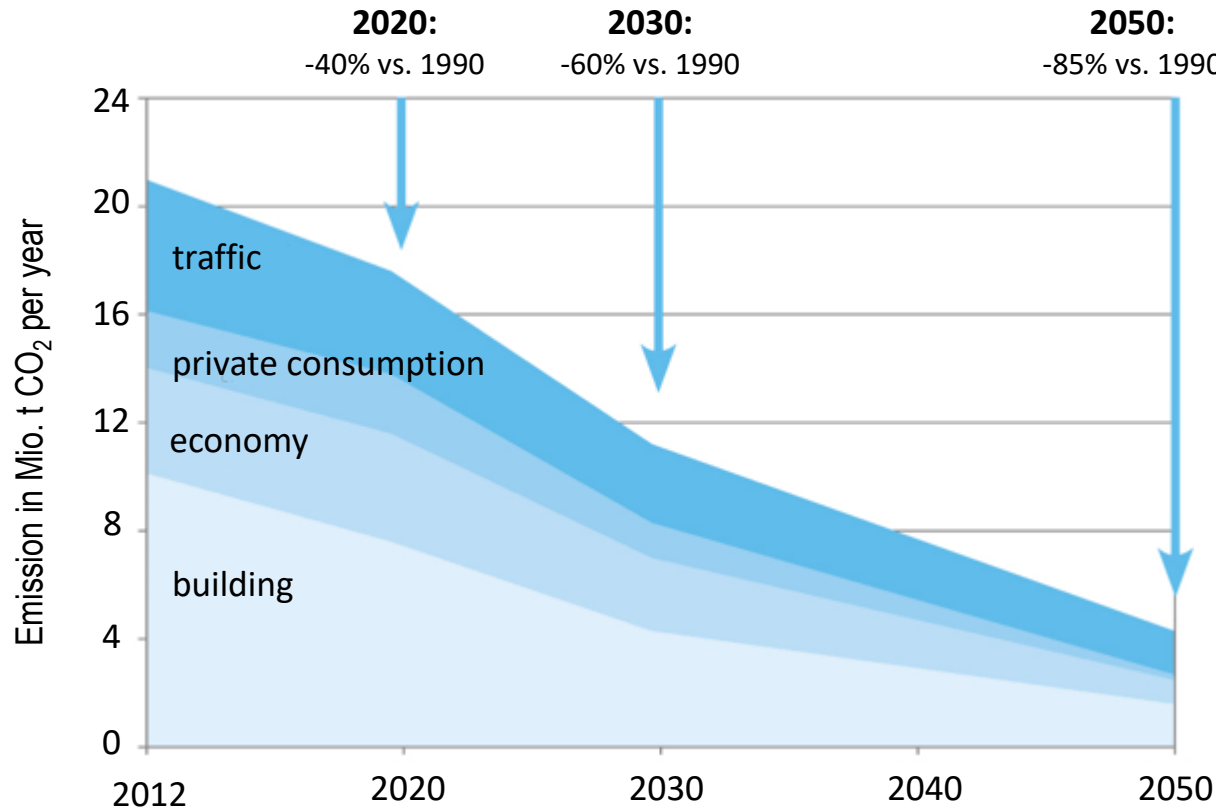
**Buildings
275 Mio. m² gross floor area**

**Daily commuters in: 300.000 persons
out: 200.000**

**Daily transportation distance
20,8 km/person (2013)**



Climate neutrality goals for Berlin



- obligatory CO₂ emission reduction goals for 2020, 2030 and 2050
- Phase - out of coal combustion for 2030
- Climate neutral city government in 2030
- climate agreements with public enterprises

- Energy Turnaround Act Berlin (2016)
- Berlin Energy and Climate Protection Program approved in January 2018

Sustainability challenges for Berlin

- Climate neutrality goals
 - **Spatial consolidation:** until 2030 approx. 194.000 new dwellings are needed, almost 50% of them should be available for groups with low income
 - **Mobility:** Mobility is essential for local and social cohesion and for economic progress. In Berlin the need for mobility increases due to population growth, due to increasing number of commuters, due to tourism and due to a changing shopping behaviour of the population. Negative impacts of traffic on climate, human health, the environment and the availability of public areas must be minimized.
 - **Perceptible Climate change:** increase of the annual average temperature, heat days, tropical nights, heavy rain events but also longer dry periods > increase of heat stress in the inner city, floods, vegetation damages, impact on local water resources.
 - **Air quality:** local exceeding of NO₂ and PM₁₀ concentration for air quality (EU Air Quality Directive and WHO reference values)
 - **Changes within the social fabric:** gentrification, migration, demography, increasing rents, etc.
- Regional concepts and plans for climate protection, housing, mobility, air quality, noise reduction, waste management, environmental justice >> Priority measures

BENE – Berlin Program on Sustainable Development

be climate friendly

be green
(adapted to climate change,
resource efficient)



EUROPEAN UNION

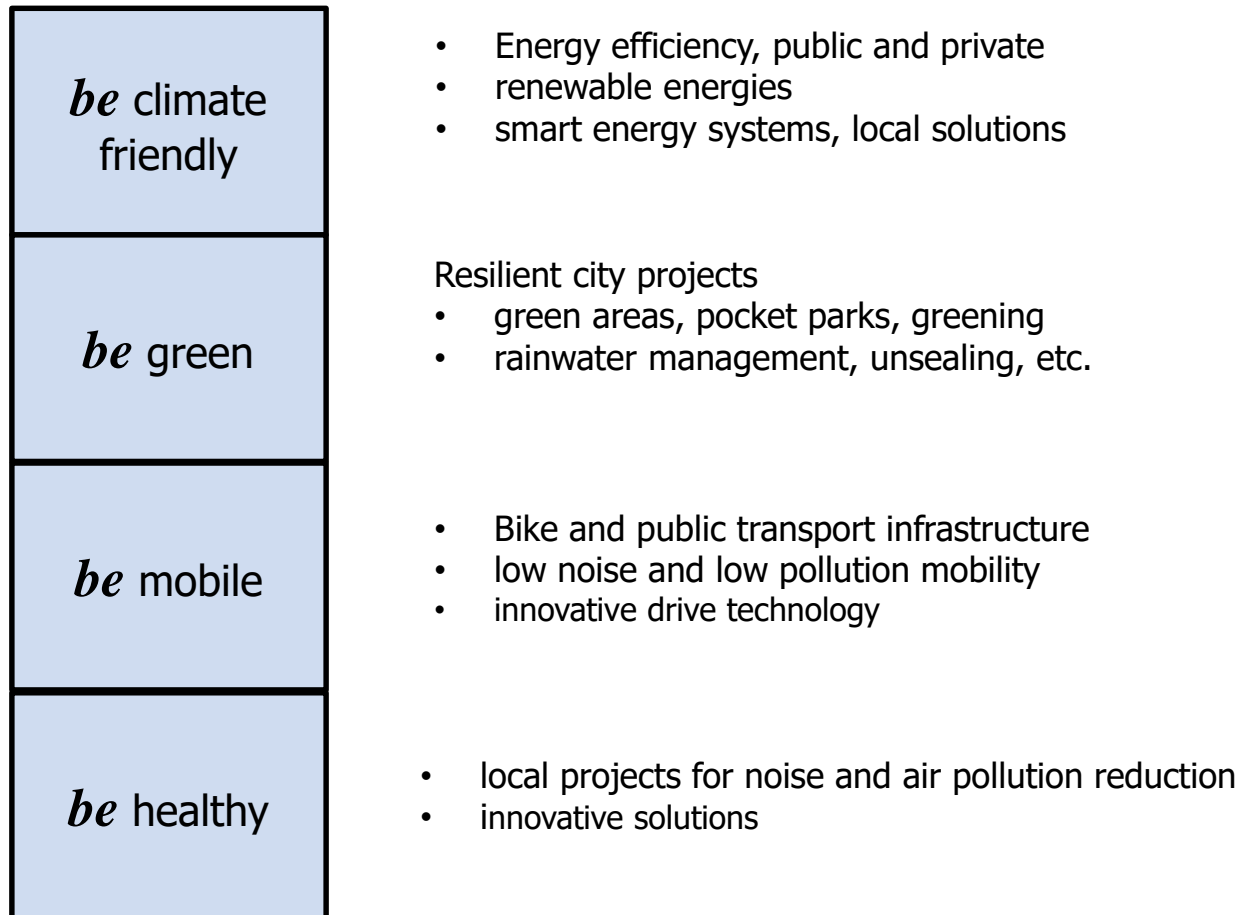
European Regional
Development Fund

2021 - 2027

be healthy

be mobile

BENE – Berlin Program on Sustainable Development



be climate
friendly

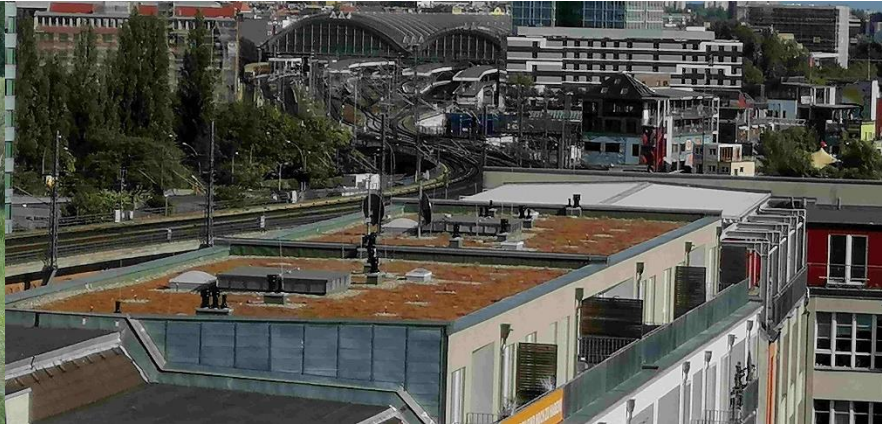


(Foto TU Berlin.)



(Fotos: B.&S.U.)

be green



(Fotos: SenUVK)



(Fotos: B&SU)

be mobile



(Copyright: Berliner Verkehrsbetriebe AÖR, Urheber: archisurf)



(Foto: Berliner Stadtreinigung)

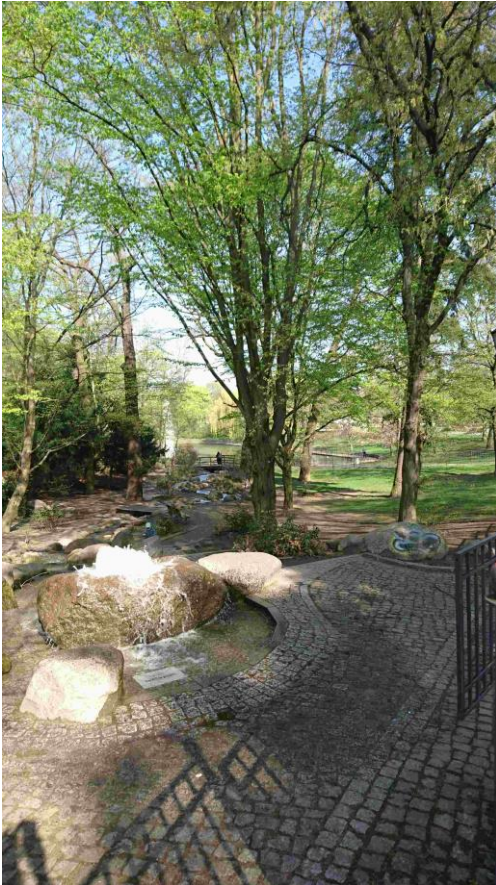


(Foto: SenUVK)



(Foto: Berliner Feuerwehr)

be healthy



(Foto: SenUVK)



(Foto: B.&S.U.)



(Foto: B.&S.U.)

ERDF - Combined projects

Project implementation:

Free Waldorf School, Prenzlauer Berg

Duration: 12/2015 – 04/2020

high-level energy efficient refurbishment

Funding:

ERDF: 0.6 Mio. € + Berlin: 0.1 Mio. €

- ✓ 166,56 t less CO₂ eq./a
- ✓ 401.692 less kWh/a primary energy

ecological enhancement of the schoolyard

Funding:

ERDF: 0,3 Mio. € + Berlin: 0,3 Mio. €

- ✓ 3.2755 m² ecological effective surface
- ✓ 1.899 m³/a less rainwater discharged to public sewage system



(Fotos B.&S.U.)

ERDF - Complex greening projects

Project implementation

district gov. Treptow-Köpenick

Environmental Refurbishment of
Treptower Park

Duration

September 2016 – August 2020

Funding:

ERDF: 1.2 Mio.€ + Berlin: 1.2 Mio. €

✓ **59,700 m² ecological
effective surface**

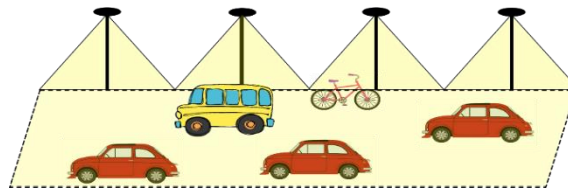


(Fotos B.&S.U.)

ERDF - Innovative projects and demonstration



(Foto Linus Lintner)

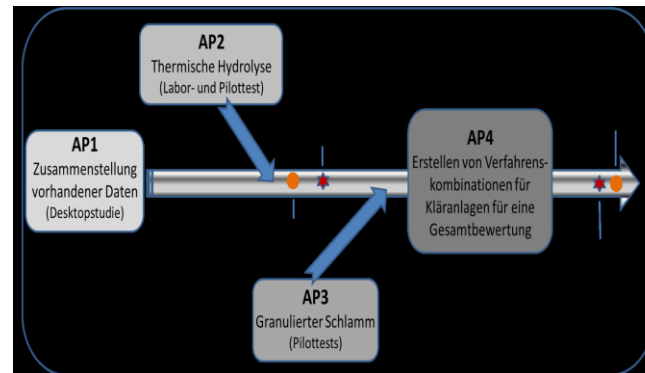


(Copyright: TU Berlin)

Development of site-specific dynamic control concepts for public street lighting (lighting level adapted simultaneously to traffic volume), implementation at demonstration sites.



(Foto KWB)



(Copyright:KWB)

Reduction of direct and indirect green house gas emission from water treatment plants, pilot scale evaluation of energy efficient water and sludge treatment processes, prepare investment decisions.

Regional challenges are identified

Actual concepts define measures

Wide experience on regional needs and ERDF support is available

The use of ERDF funding in cities like Berlin is especially suitable for:

- **Complex and challenging projects**
- **Long lasting projects**
- **Projects with multiple stakeholders**
- **Projects too complex to be realized by a single partner**

